

220, 225, 230 & 280 Series High Performance Cast Vinyl manufactured by 3M

WHY BUY GERBER?

Custom formulated for Gerber by 3M for over 30 years

Strict manufacturing processes reduce contaminants and ensure top quality

Polybagged & individually boxed for safer shipping and storage

220/225 Series **conformability** works over rivets and corrugation

Moisture resistant, clear synthetic liner for easy application – 225 & 230 Series

Superior longevity
Colors and B/W last up to eight years

Reflective 280 Series provides **high visibility, both day and night**

Specifically formulated for **optimal vinyl cutting, weeding, and application**

Over **150 brilliant colors**

Clear pressure-sensitive adhesive **withstands severe weather and rough handling**

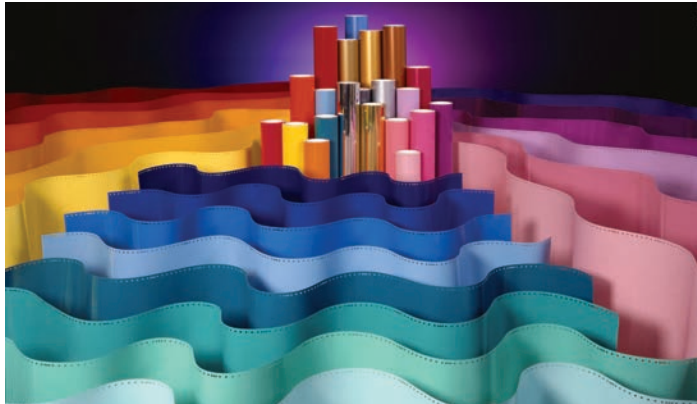
Blue liner on 220 White vinyl provides easy weeding

Gerber set the industry standards for **High Performance Vinyl** over 30 years ago. Delivering outstanding performance and an unparalleled selection, Gerber premium graphic films are available in more than **150**

popular colors and **15", 24", 30" and 48" widths**. These durable and easy-to-handle cast vinyl films are perfect for vehicle applications, window displays, labels, decals, and signs of all shapes and sizes.

Gerber High Performance Vinyl manufactured by 3M 220, 225, 230 and 280 HP Series

The very best vinyl in the business. Engineered to provide your customers with the long lasting brilliance and durability they expect, and the consistent surface and application ease to get the job done right... the first time!



Quality

- Manufactured in the USA by 3M to Gerber specifications
- Strict manufacturing processes reduce contaminants and ensure top quality
- Polybagged and individually boxed for safer shipping and storage
- Simulated PANTONE® colors conform to fleet, corporate, and agency specs

Service

- Headquartered in the USA
- Local customer service at 1.800.222.7446
- Same day shipping
- Nationwide network of well-stocked distributors
- Expert application support
- Trusted Gerber quality for more than 30 years!

Over 30 Years Of Solutions For Creative People

Gerber Technology Sign & Graphics (formerly GSP) was founded in 1980 as a subsidiary of Gerber Scientific, Inc. The concept of an automated lettering system — Signmaker III — was born at Gerber in the early 1980s, starting a revolution in the way the world creates signs. To support this new technology, Gerber introduced cut vinyl for automated plotters.

For over 30 years, thousands of creative entrepreneurs have built successful businesses based on the Gerber “total solutions” approach to design and development. Gerber products are synonymous with quality — which is backed by decades of contributions and partnerships inside the visual imaging industry.

GERBER TECHNOLOGY

24 Industrial Park Road West, Tolland, CT 06084 USA

TOLL FREE (USA): 800.222.7446

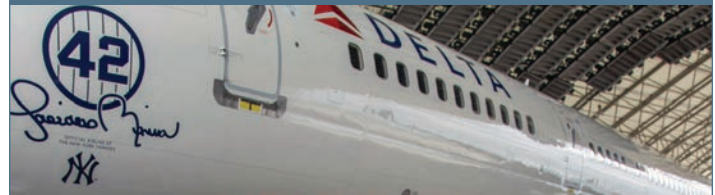
TELEPHONE (International): +1.860.871.8082

www.gerbertechnology.com/signage
P84836A

PANTONE is a trademark of Pantone LLC.

© 2017 Gerber Technology LLC. All rights reserved.

Available in 15” and 30” punched
24” and 48” unpunched



220 High Performance

High-performance 2-mil cast vinyl specifically developed for Gerber by 3M for optimal vinyl cutting, weeding, and application. Clear pressure-sensitive adhesive allows production of attractive two-way markings. Excellent durability with five- to eight-year exterior life.



225 High Performance

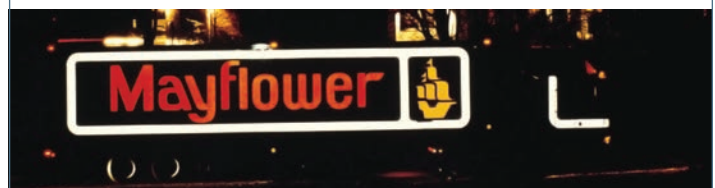
High-performance 2-mil cast vinyl film on a transparent synthetic liner. Expressly formulated for Gerber. Transparent synthetic liner is moisture-resistant and offers superior registration for multi-color cut vinyl applications. Clear pressure-sensitive adhesive allows for production of attractive two-way markings. Excellent durability with five- to eight-year exterior life.

Available in 15” and 30” punched



230 Translucent

High-performance 2-mil cast vinyl designed for use on internally illuminated signs, awnings, and window graphics. Features uniform color with a surface finish to eliminate glare. Five-year exterior life except Metallic Gold and Gold Nugget, which have a three-year exterior life.



280 Reflective

Series 280 7-mil reflective sheeting is designed for markings requiring high visibility, both day and night. The material has good flexibility and provides excellent conformance to flat or moderately curved substrates. Seven-year exterior life for all colors; five-year exterior life for Black.

 **GERBER**
TECHNOLOGY