

Now is the time
to upgrade your
old Gerber equipment



Get up to \$2,000 on Equipment Trade-ins!

\$2,000 Printer Trade-in

Trade in ANY GERBER EDGE® Series printer, working or not, and receive \$2,000 off the list price of a brand new EDGE FX™ printer*. You can even keep your current EDGE unit for 90 days to use up remaining foil stock and get the most out of the trade!

\$1,000 Plotter Trade-in

Trade in any plotter, working or not, and receive \$1,000 off the list price of any brand-new Gerber 15" sprocket plotter: enVision™ 375, GS15 Plus™, GSx Plus™.

We will even accept as a trade:

- ANY Gerber console system (i.e. SignMaker IVB), working or not.
- ANY competitive plotter, working or not.

Equipment	Standard List Price	Trade-in Value	Special List Price
EDGE FX	\$13,995	\$2,000	\$11,995
enVision 375	\$10,995	\$1,000	\$9,995
GS15	\$6,995	\$1,000	\$5,995
GSx	\$5,995	\$1,000	\$4,995

Bundle Bonus

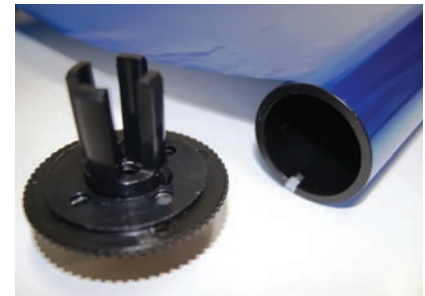
In addition, choose one of any or all of the **Bundle Bonus** offerings at the special list price of \$300, if ordered at the time of your trade-in*.

Bundle Bonus Item	Special List Price
Latest OMEGA™ CP software upgrade (1)	\$300
EDGE-to-EDGE FX Foil Conversion Kits, P84334A (10)	\$300
EDGE FX caddies, P80095A (12)	\$300
2nd year EDGE FX warranty	\$300
OMEGA Layout Station, P84680A (1)	\$300
45 meter foils, your choice (5)	\$300
50 yard rolls of HP 220 White, P83248A (2)	\$300
50 yard roll of LexEdge™ II 10 mil, P63563 (1)	\$300

* EDGE FX and 15" sprocket plotters must be ordered for immediate release and must ship from Gerber direct to the customer to qualify for this program. See your local Gerber Distributor for full details.

Why Upgrade to an EDGE FX and enVision?

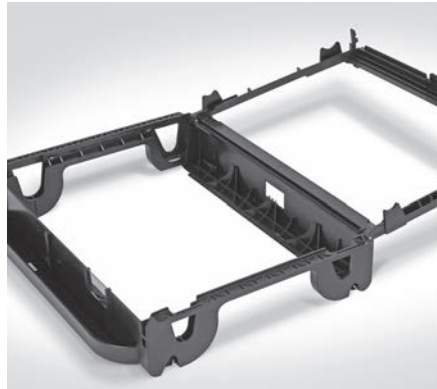
- Printing up to **3X faster** than an EDGE 1.
- **Higher resolution** – 1200 x 300 dpi (vs. 300 x 300 dpi or 600 x 300 dpi).
- **Ethernet connection** for increased versatility and access.
- **Smart Foil Technology** knows the GerberColor™ foil you've loaded, and how much foil remains.
- **Save up to 18%**. Standard EDGE FX GerberColor foils are 10% less expensive than the GerberColor foils you currently use, and 18% less expensive if purchased in 91-meter format.
- **One-year warranty**, parts & labor. Second year is available as a Bundle Bonus item.
- **External-loading foils** are purchased as **refills**, eliminating waste and extra cost.
- **Adaptor end caps** allow you to use every last bit of your EDGE 1 or EDGE 2 foil. Available as a Bundle Bonus item.
- **Auto-Align**, exclusive to EDGE FX and enVision pairing only, eliminates need for repeated manual alignment, enabling **fastest print-cut throughput operation**.



Loading the EDGE FX is as simple as 1-2-3



- 1.** Remove your new FX foil from its packaging.



- 2.** Install the foil into a **re-usable** caddy.



- 3.** Pop the caddy in from the outside of your new EDGE FX. That's it!
You are ready to print.

GERBER TECHNOLOGY
24 Industrial Park Road West, Tolland, CT 06084 USA

TOLL FREE (USA): 800.222.7446
TELEPHONE (International): +1.860.871.8082

www.gerbertechnology.com/signage
P84837A

enVision is a trademark of 3M Company that is licensed to Gerber. OMEGA, GERBER EDGE, EDGE FX, GS15 Plus, GSx Plus, GerberColor and LexEdge are trademarks or registered trademarks of Gerber Technology LLC.

© 2017 Gerber Technology LLC. All rights reserved.