

**TITLE:** How to make the Graphtec FC 8000 work with OMEGA 4.0

Category: OMEGA

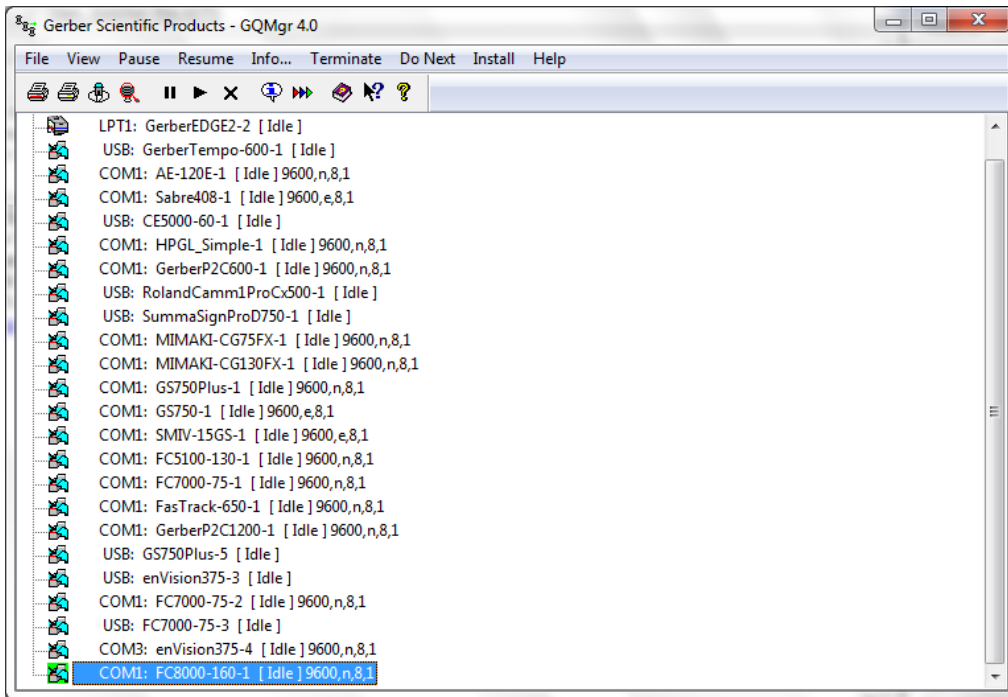
Document Number: 3579

Supplied by: Gerber Service

Last Modified: January 15, 2014

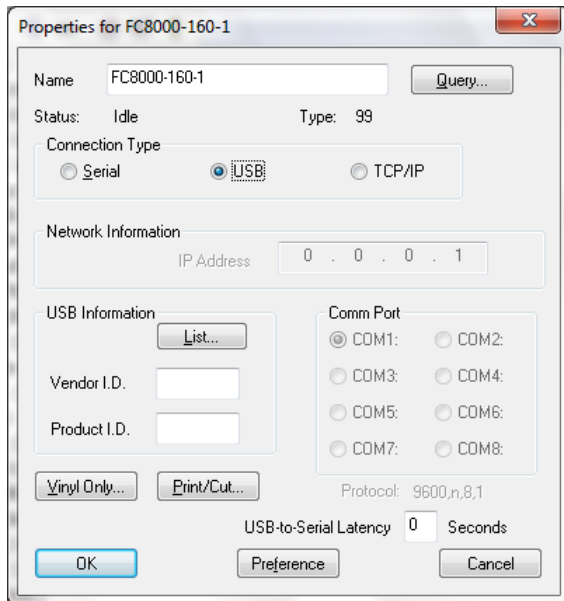
Summary: The solution to the technical service question "I cannot get my Graphtec 8000 to work with OMEGA 4.0"

1. Install the Graphtec 8000 USB driver from the Graphtec installation CD.
2. Connect the Graphtec to the computer and turn it on.
3. Open GQMgr 4.0 or newer.



4. Right click on the FC 8000. Click Properties on the drop down menu to display the Properties for FC8000-160-1 dialog box.

5. Choose the USB radio button and then click the list button to open the Select USB Vendor and Product Numbers dialog box.



6. Under Connected Devices you will see printing support VID = 0b4d, highlight that line and click OK. The Properties for FC8000-160-1 dialog box displays.

7. Select Preference. Click Yes and then OK to finish.