

TITLE: OMEGA serial number and system ID number

Category: OMEGA™ software

Gerber FastFact #: 3800

Supplied by: Gerber Service


Last Modified: 4/8/08

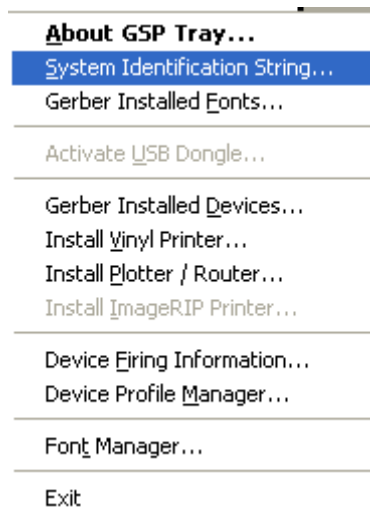
Summary: This document will help you identify the location of the system serial number for your particular OMEGA configuration.

You can use any of the methods below to find your OMEGA serial number and system identification number.

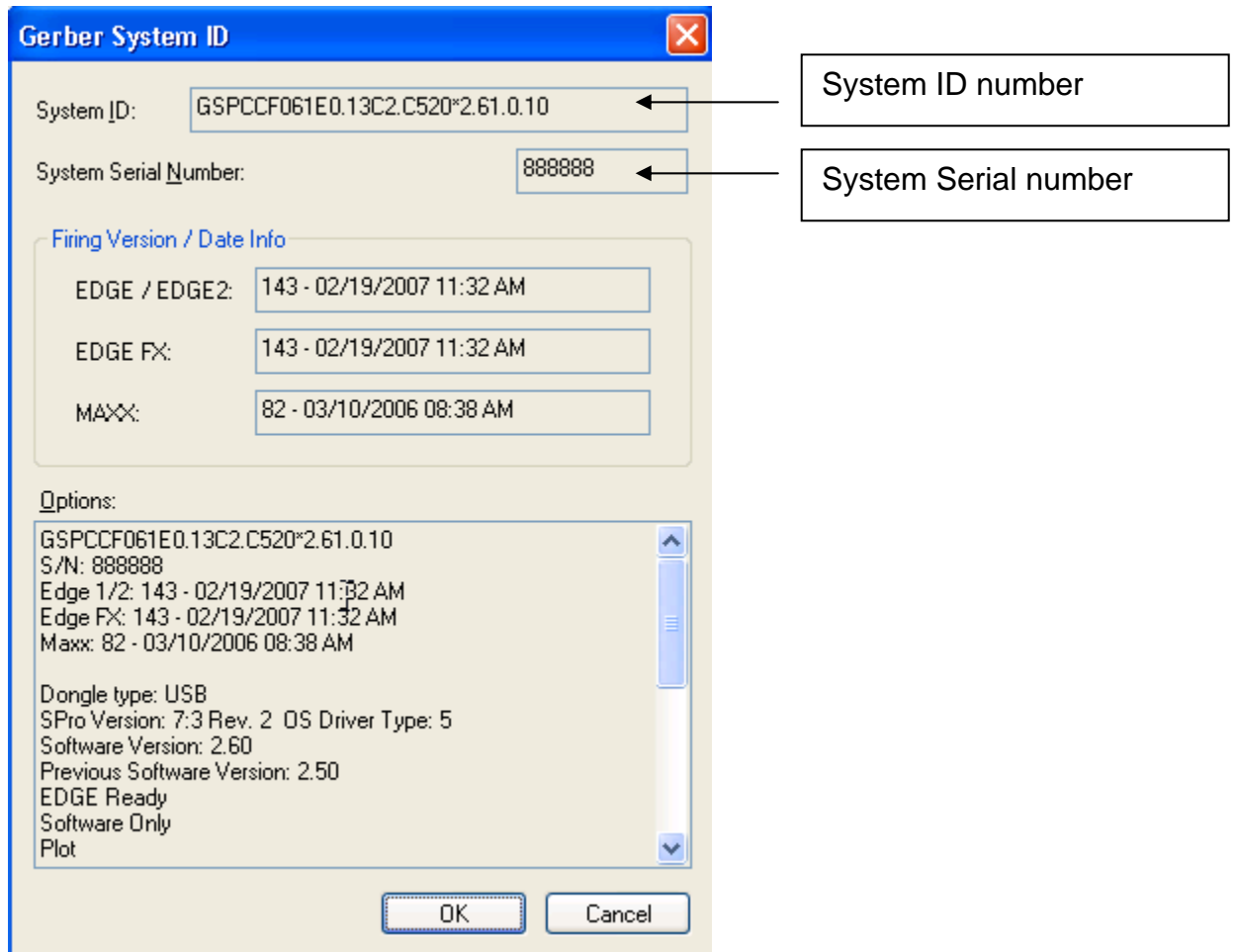
1. GSP Tray
2. OMEGA software box
3. Security key report / block report
4. OMEGA.log file

1. GSPTRAY

- If GSPTray is not running in the status bar, go to START | PROGRAMS | OMEGA | GSPTray
- Right click on GSPTray icon  in your status bar.
- Click System Identification String



Your serial number and ID number are displayed.



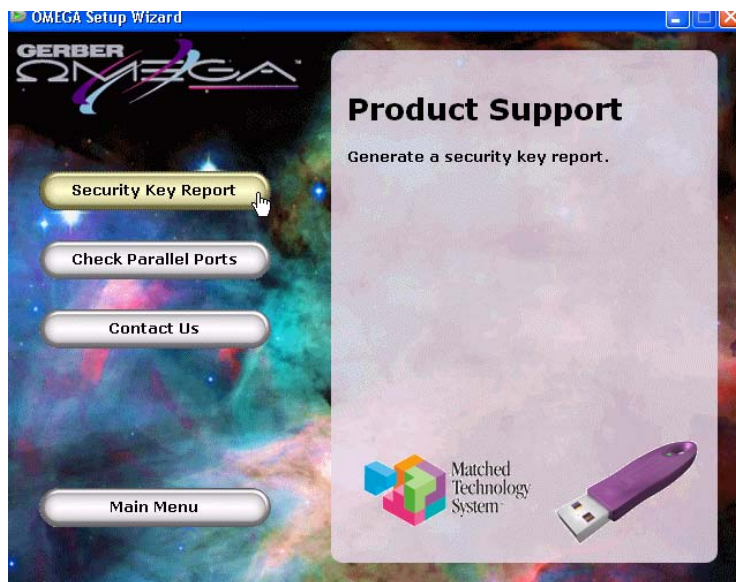
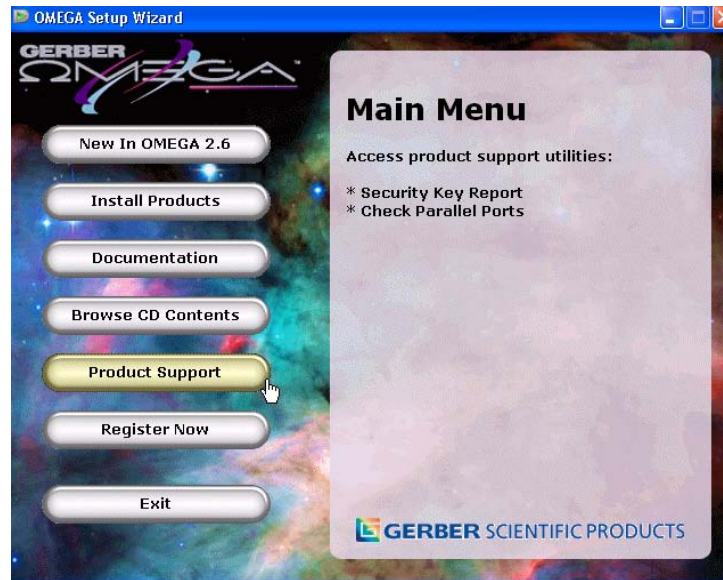
- Verify the serial number displayed with the serial number printed on the label on the security key.

2. OMEGA Software box

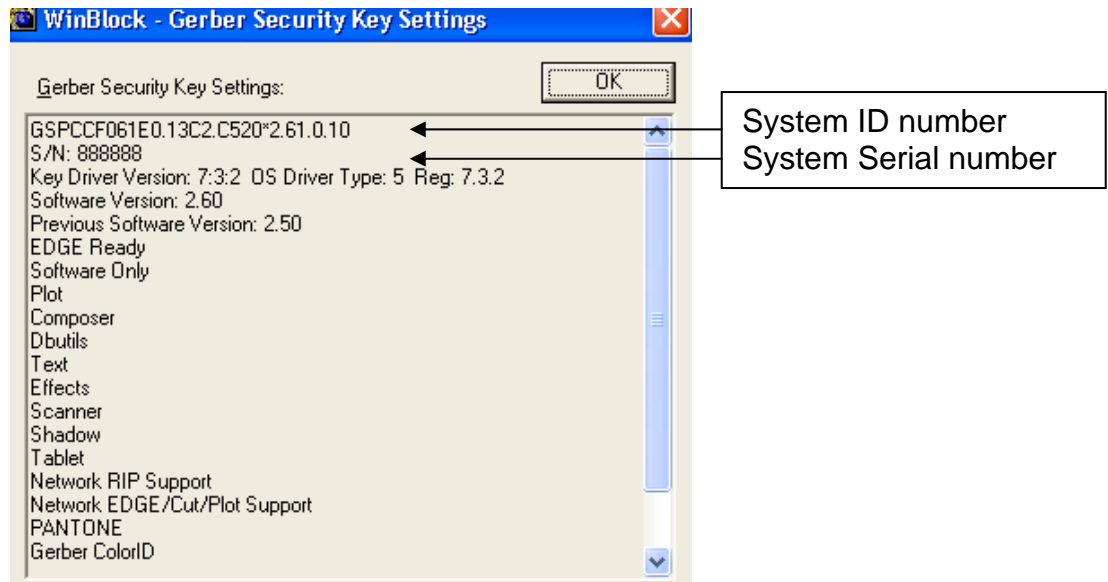
- Your OMEGA serial number and system ID are printed on the outside of your current OMEGA box.
- Verify the serial number displayed with the serial number printed on the label on the security key.

3. Security Key report / block report

- Put your OMEGA software disk in the CD-Rom drive.
- Click product support from the main menu
- Click security key report (block report)



- Your serial number and GSP System ID number will be displayed.
- Verify the serial number displayed with the serial number printed on the label on the security key.



4. Open c:\omega.log

- Your serial number and GSP system ID number are listed.
- Verify the serial number displayed with the serial number printed on the label on the security key.