

TITLE: Contour Cutting Gerber Jetster™ Graphics from Gerber ImageRIP™ on the GERBER P2C™ Plotter using OPOS

Category: Plotters – General, Gerber Jetster, ImageRIP

Gerber FastFact #: 7003

Supplied by: Gerber Training (C.O.)

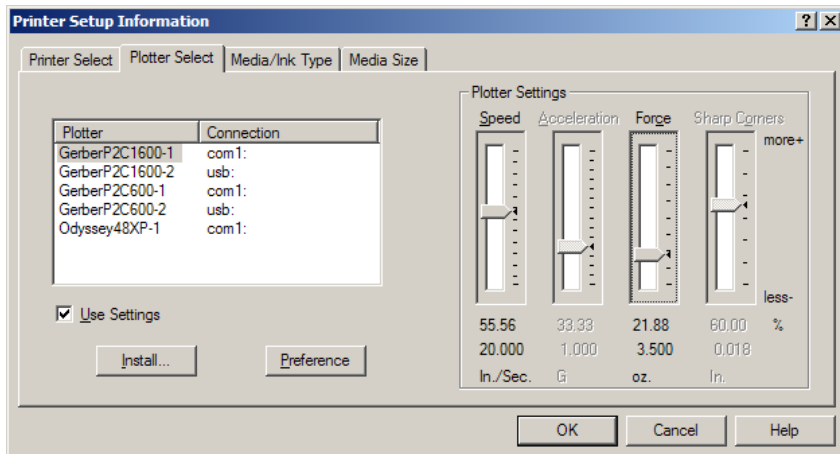
Last Modified: 11/4/04

Summary: Instructions on cutting graphics printed by a Gerber Jetster via Gerber ImageRIP and cut on a GERBER P2C Plotter equipped with OPOS (automatic target acquisition.)

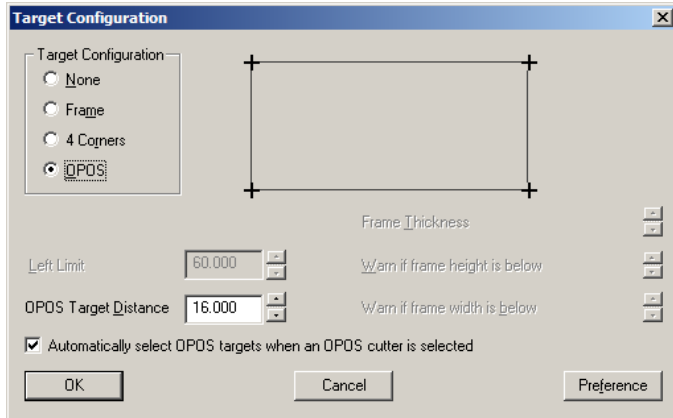
Underlined text indicates change from the previous document.

Contour Cutting Jetster Graphics from ImageRIP on the GERBER P2C Plotter using OPOS

When printing a job on the Jetster and cutting it on a P2C plotter, be sure to choose the P2C model you wish to use in ImageRIP prior to printing the graphic.



You will also need to choose the OPOS target configuration by clicking on the Targets icon and selecting OPOS.



OPOS Target Distance defaults to printing additional sets of targets every 16 inches in the X length. This is recommended to ensure the most accurate cut.

Click OK to accept.

Note: While the OPOS target acquisition system works very well with most materials, it does have certain limitations. We have identified a couple of materials including static cling and certain glossy treated inkjet media that do not perform optimally with OPOS in the area of target recognition. Likewise, printing on a colored media or printing targets in colors other than black will introduce less contrast between targets and background and can lead to target readability issues.

After printing your graphic, load the material on the P2C plotter and from ImageRIP click on the Cut icon (F8).

The job will be sent to the plotter and the plotter will read: “Set Sensor Above First Marker” Use the slew key to set OPOS above the first target. Push the enter key on the plotter.

The plotter will search for the first target, and then slew the material for the job out. It will then locate the first target again.

It will then search for the second, third and fourth targets and then cut the job followed by the weed border.

Note: It is not recommend that you print a bleed or print to the edge of the cut line when using InstaChange removable vinyl as this will result in the vinyl curling away from the liner along the cut line.