

See "Rigid Material Application Notes" and manufacturer's website for specific, detailed guidelines and instructions.

GENERAL INFORMATION

MATERIAL DESCRIPTION

Olympic Panel Pre-finished UV premium sign board is satin gloss (reflectance of 25 to 35) white finish MDO plywood ready for digital printing and is warranted by the manufacturer against flaking & peeling; economical, excellent scratch, chip & mar resistance, superior weatherability.

RECOMMENDED APPLICATIONS

- Interior signage
- Exterior signage (must be edge sealed)

CAUTIONS

1. Be specific when ordering material as there are many similar materials and finishes, yet performance and results will vary significantly, even among like materials.
2. Be sure to measure dimensions of material prior to printing as they are not always consistent.
3. The following may cause adverse effects on ink adhesion and durability:
 - Failure to acclimate material to ambient conditions for at least 24 hours.
 - Failure to print under recommended ambient conditions.
 - Neglecting to properly clean the print surfaces. This will allow debris to be visible after printing. Ensure that 99% isopropyl alcohol is used for cleaning.
 - Using thinners or soaps which may leave a film residue which can affect adhesion. Additionally, cleaners containing silicone can interfere with adhesion and are not recommended.
4. Ink adhesion increases at higher pass modes (8 Pass > 4 Pass > 2 Pass).

WARNING: Be sure that material is completely flat. Bent edges may cause damage to printheads and/or other hardware. Tape down edges as necessary. Leaning may cause warping.

PERFORMANCE TESTING RESULTS

See "Material Performance Testing Process" document for process explanation and test conditions.

ADHESION TESTING

Tape Test: Level 5, Excellent
Cross-Hatch Test: Level 2, Standard

ABRASION RESISTANCE

Level 5, Excellent

CHEMICAL RESISTANCE

Level 5, Excellent

OUTDOOR DURABILITY

GerberCAT inks are outdoor durable for up to 3 years. Consult material manufacturer for durability of substrate. Testing of application in intended environment is advised.

MATERIAL HANDLING RECOMMENDATIONS

STORAGE

1. Do not store in contact with the ground.
2. Do not stack vertically.
3. Flat; If leaned, on long (horizontal) edge only.
4. Cool, dry, clean, well-ventilated area with stable temperature.

SURFACE PREPARATION

1. Allow to acclimate to room temp at least 24 hours (manufacturer recommends 72 hours) prior to printing or cutting.
2. Print surface should be free and clear of any surface contaminants (i.e, oils, dust, fingerprints, etc.) prior to printing.
3. Clean with 99% isopropyl alcohol, using a non-colored cloth. Best results have been obtained when applying the alcohol to the wiping cloth rather than directly to the material and when wiping in a straight-line motion rather than circular.

POST-PRINT

Ink cures enough to be touched immediately without adverse effect. Full cure occurs between 15 minutes and 24 hours dependent upon material and ambient conditions. Cutting, routing, or any additional undertakings should run flawlessly. If any flaking or cracking occurs, allow to sit 24 hours for full cure.

See manufacturer's website for more information.

TESTED PRINT CONDITIONS

AMBIENT TEMPERATURE

70°F (21°C)

AMBIENT HUMIDITY

40%, non-condensing

PRINTER RESOLUTION

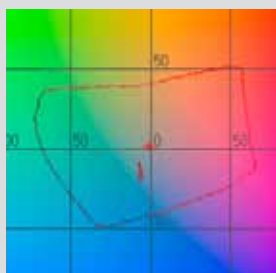
360 dpi

PRINT MODE

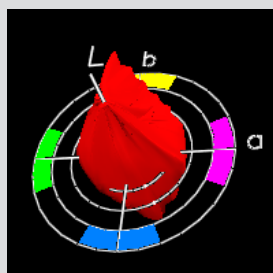
4 Pass, Unidirectional

COLOR GAMUT

2-DIMENSIONAL



3-DIMENSIONAL



COLOR MANAGEMENT

RECOMMENDED RENDERING INTENTS

CMYK Vector: Relative colorimetric

CMYK Image: Perceptual

RGB Vector: Relative colorimetric

RGB Image: Perceptual

MATERIAL PROFILES

The recommended profile can be downloaded from the corresponding materials page on the gspinc.com/applications webpage.

NOTE: Double striking may provide more desirable ink coverage; however, color results can be unpredictable (may not be desirable or repeatable).

CAUTION: Failure to manage color settings consistently throughout the entire workflow, from image generation through final print, will result in guesswork and unpredictable and potentially unfavorable end results.

