

Configuring the ports after OMEGA 2.6 installation

After installing the OMEGA 2.6 software it is important to instruct your computer on where to find the USB security key. By doing this the security software will not interfere with other devices on other ports. Parallel ports should be turned off as described in the following procedure.

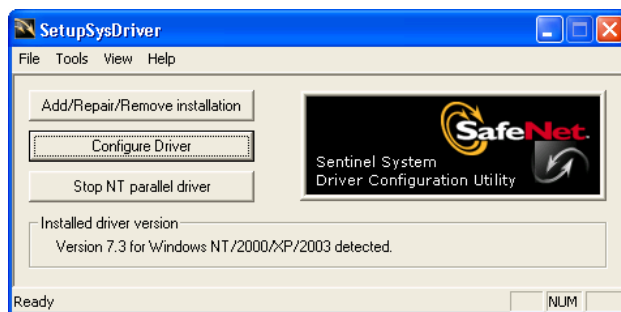


Note: To run a GERBER EDGE 2 the Port Type must be an ECP port or the EDGE 2 will not function properly.

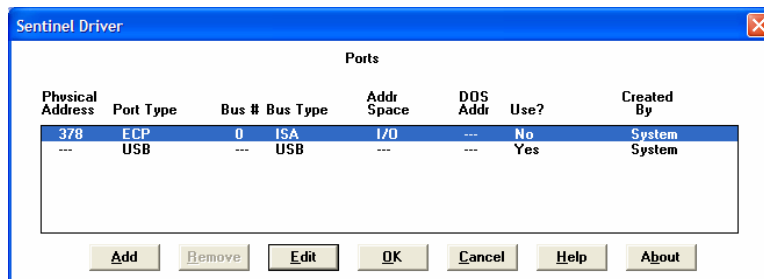


To determine port configuration

- 1 Click Start > Programs > GSP OMEGA > Sentinel Config to open the Sentinel System Driver Configuration Utility.



- 2 Click Configure Driver to open the Sentinel Driver Port dialog box.



- 3 Configure all parallel ports (non-USB) to say No in the Use? Section. All USB ports should say Yes.
- 4 Use the Edit button to go to the Configure Port dialog box and change the Use this port? To Yes or No. (No for parallel ports, yes for USB ports)



Note: If your system has a third party port, you may need to manually configure the address using the Add button.

- 5 Click OK to return to the Sentinel System Driver dialog box.
- 6 Click OK to restart the computer so the change will take effect. On some systems, you may have to restart manually.



Tip: If you do not already have output devices installed, it is advisable to install them now. See "Chapter Three: Adding Output Devices" for more information.