

Installing a GERBER EDGE[®] via USB using a third-party cable and OMEGA 2.5 or higher

The GERBER EDGE may be installed via USB using a third-party USB-to-Parallel cable available from local computer stores and OMEGA 2.5 or higher. Most of these generic USB-to-Parallel cables use the standard Windows drivers to communicate with the printer. In addition to the driver you must update OMEGA software files: G32Setup.dll and GQ Manager by downloading the USB-to-Parallel software update from the GSP[®] website.

Gerber has performed limited testing of USB-to-Parallel cable and cannot guarantee success with all cables in the market. Your results may vary. During testing we have experienced success with the following cables:

- ◆ InSystem Design ISD 103
- ◆ Belkin[®] VID_05AB (This older Belkin cable was successful; a newer Belkin cable IVD_050D did not work.)
- ◆ Radio Shack[®] VID1453



Note: GERBER EDGE 2 is NOT compatible with third-party USB-to-Parallel cables and is only tested and supported with the custom Gerber USB-to-Parallel cable. Contact your Gerber Distributor to purchase a "USB-to-Parallel Option Kit" for the GERBER EDGE 2.

A generic USB-to-Parallel cable may be compatible with:

- ◆ GERBER EDGE (*NOT the GERBER EDGE 2*)
- ◆ OMEGA[™] 2.5 or higher
- ◆ Windows[®] 2000 or Windows XP

Connecting the GERBER EDGE via a generic USB-to-Parallel cable



Note: You must have Administrative privileges to install the Windows USB-to-Parallel driver on your system.



To connect the USB-to-Parallel cable and install the driver

- 1** Be sure the GERBER EDGE is powered off. Connect the parallel (Centronics) end of the cable into the back of the GERBER EDGE.
- 2** Connect the USB end of the cable into the USB port of your computer. Windows should detect the new device and display the "Found new hardware: USB Printing Support" message on the Windows task bar.
- 3** Within several minutes the computer should automatically locate and install the driver and then display the "Found new hardware: Your hardware is installed and ready to use" message.

Installing the USB-to-Parallel OMEGA software update

You must update two OMEGA software files before you can install the GERBER EDGE using a USB port. The USB-to-Parallel software update is located on the GSP website and includes the following files:

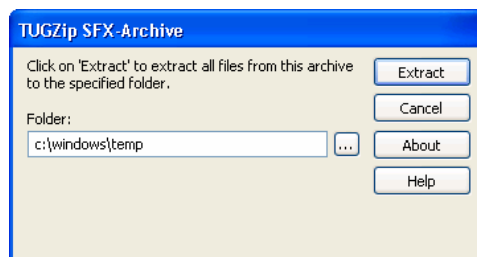
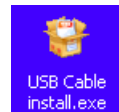
- ◆ G32Setup.dll
- ◆ GQ Manager (version 2,5,0,11 or higher)

To install the USB-to-Parallel software update



Note: If you do not have OMEGA 2.5 software already installed you will see a similar message to the following: "Invalid Target System: This updated is intended for systems with a version of 2.5.0.349 or higher. Your system is 2.1.0.15." You must install a valid version before installing this update.

- 1 Locate the file USB-to-Parallel Software Update on the GSP website:
www.gspinc.com/support/downloads/software.html
- 2 This update will load only on systems with OMEGA 2.5 already installed. Close all OMEGA programs, including GSP Tray. (It is also a good idea to close any Windows programs that are running.)
- 3 The setup program and all the necessary components of this update have been compressed into a self-extracting archive. Double-click the Download icon and you will be asked to Run or Save the file.
- 4 Choose Save and browse to the location in which to save the downloaded file such as the Windows Desktop. Saving the download to your Windows Desktop makes it convenient to locate the file in the next step.
- 5 After downloading (extracting) the file, double-click the USB Cable Install.exe file on your Windows Desktop (or locate it through Windows Explorer), or execute the USB Cable Install.exe from the Start > Run command line. The TUGZip SFX-Archive displays.



- 6 Click Extract to unzip the files to the Windows temp folder, or choose a different location in which to place the files such as the Windows desktop. The USB-to-Parallel Cable Update automatically launches and installs the software update.
- 7 Click Finish when the USB-to-Parallel Cable Update is complete.
- 8 Click Cancel to close the TUGZip SFX-Archive dialog box.
- 9 After a successful upgrade the GQ Manager will be updated to version 2,5,0,11. The version may be verified in GQ Manager > Help > About GQ Mgr.

Installing the GERBER EDGE as a USB device

Installing the GERBER EDGE via USB is a multi-step process:

- ◆ Install the GERBER EDGE as a USB device.
- ◆ Assigning the Vendor and Product ID numbers to the USB-to-Parallel cable.



Note: You must install the USB-to-Parallel software update from the GSP website before installing the GERBER EDGE as a USB device.

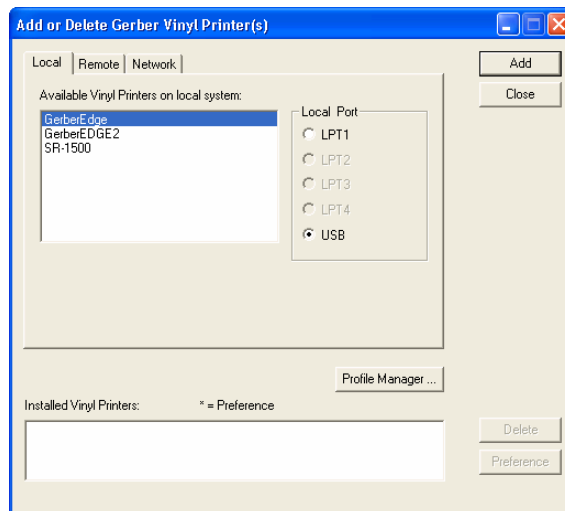


To install the GERBER EDGE as a USB printer

- 1 Open the Add or Delete Vinyl Printer(s) dialog box using one of the following techniques:
 - ◆ Click Start > Programs > GSP OMEGA > GQ Mgr to open the GQ Manager dialog box. Click Install and choose Vinyl Printer. The Local tab displays.

OR

 - ◆ Right-click the GSPTray icon that is found on the bottom right of your Windows task bar and choose Install Vinyl Printer. The Local tab displays.



- 2 Choose a GERBER EDGE or GERBER EDGE 2 and click USB for the Local Port.
- 3 Click Add to open the Add - Name Device dialog box.



- 4 Accept the default name or enter your own description for the device. The description appears in the output dialog boxes. Click OK. The name of the new printer will appear in the Installed Printer(s) field of the Add or Delete Gerber Vinyl Printer(s) dialog box.
- 5 Close the Add or Delete Gerber Vinyl Printer(s) dialog box.

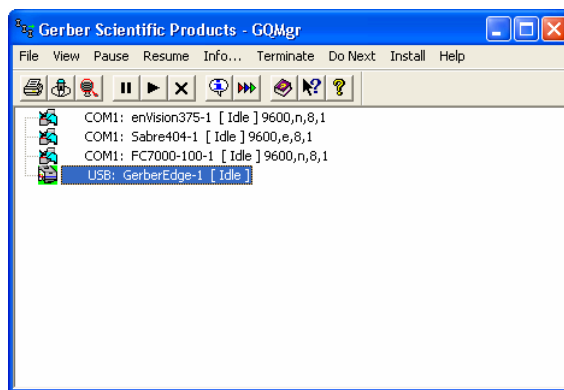
To assign the Vendor I.D. and Product I.D. for the USB-to-Parallel cable

Once you have installed the GERBER EDGE, you must assign the USB cable Vendor I.D. and Product I.D. to the USB port using the GERBER EDGE Properties dialog box.

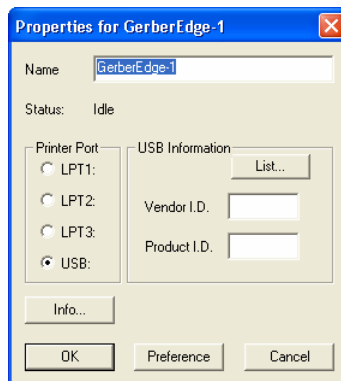


Note: You must have installed the USB-to-Parallel software updates before assigning the Vendor I.D. and Product I.D. for the USB-to-Parallel cable.

- 1 Click Start > Programs > GSP OMEGA > GQMgr to open the GQ Manager dialog box.



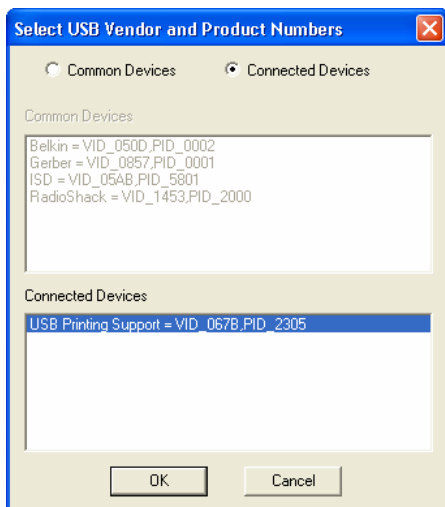
- 2 Right click the **USB: GerberEdge** and choose Properties.



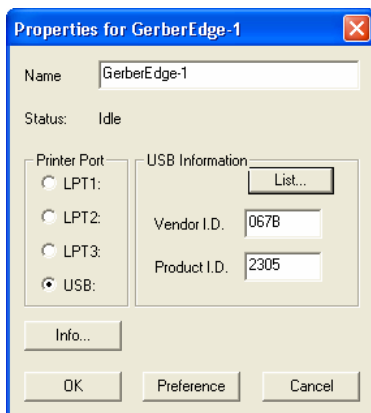
- 3 Click the List... button to open the Select USB Vendor and Product Numbers. Connected Devices should be selected and the USB Printing Support Vendor I.D. (VID) and Product I.D. (PID) should display in the lower window.



Note: The following illustration is an example; your VID and PID numbers may be different.



- 4 Make sure the USB Printing Support device is selected and click OK to return to the Properties for Gerber EDGE dialog box. The Vendor I.D. and Product I.D. numbers should be visible in the USB Information fields.



- 5 Click Preference to save the settings.
- 6 Click OK to return to GQ Manager. The GERBER EDGE should be ready to print via the USB-to-Parallel cable.



Note: GSP has had success with several USB-to-Parallel cables that are readily available in the market. Your results may vary. Gerber does not guarantee success with all cables.