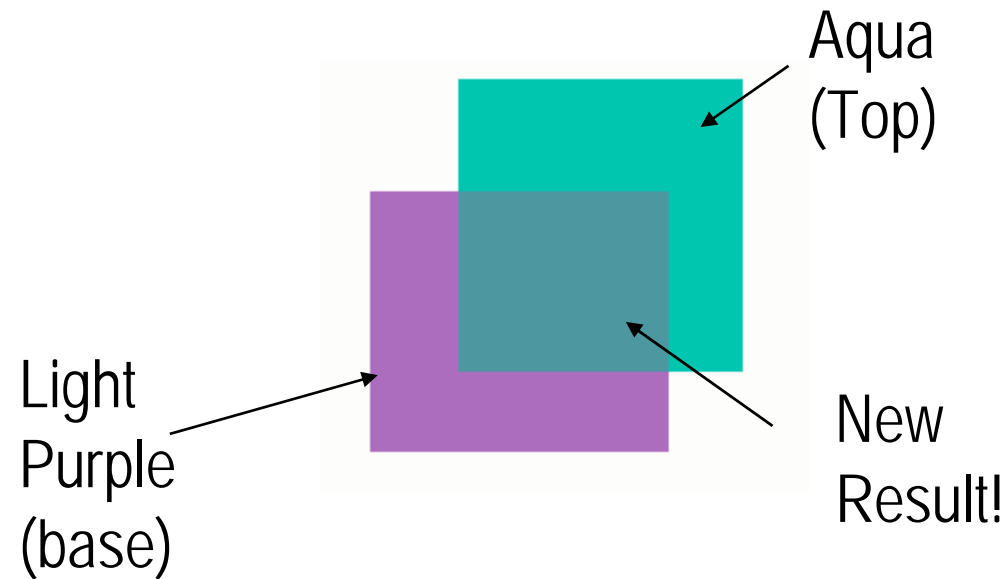


Getting More Spot Colors with GerberColor Spectratone

- Gerbercolor Spectratone overprints 2 spot colors to create a new 3rd spot color



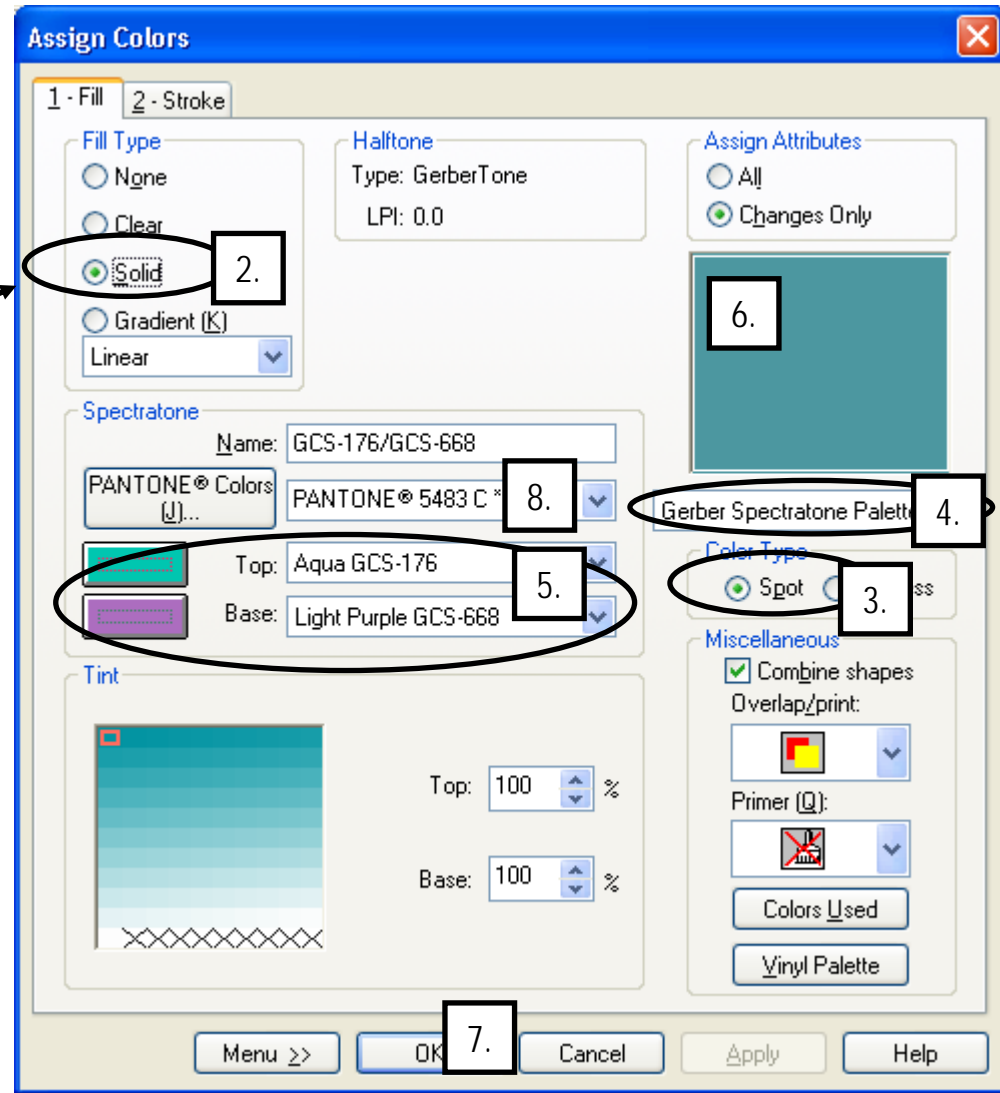
How to Create Spectratone?

- Select an object

1. Go into Fill Dialog box
2. Choose Solid Fill Type
3. Choose Spot Color
4. Choose Gerber Spectratone Palette
5. Choose Top and Base Colors
6. Color shown in preview is the actual new color
7. Click OK

- TIP!
- 8. You can type in a PANTONE® Number and get the closest Spectratone color instantly!

[VIDEO of GerberColor SpectraTone](#)



How to Output Spectratone?

- If colors are assigned as Spectratone, the two colors will output automatically. Just output as usual!

