



# Advanced Topics & Features

GERBER OMEGA

DIAL 800 768 2983  
Access Code 7141965#

# Topics



- Welcome and Questions
- Where to find more information
- Advanced Topics
- Q&A



- OMEGA DVD
  - What's New PDF with Video Links
  - Help and Manuals
- WWW.GSPINC.COM
  - <http://www.gspinc.com/learning-center/omega-software>
  - <http://www.gspinc.com/products/software/omega>
  - [What's New in OMEGA 6.5.PDF](#)

# Topics



- Plot
  - Auto Archive
  - Plot Weed Sections
- Soft shadows
- SPL files
  - View, Create, Adjust, Print
- Distorted gradients
- On-screen fills
- PLT Extract

# Plot Auto Archive (Added in OMEGA 5.0)

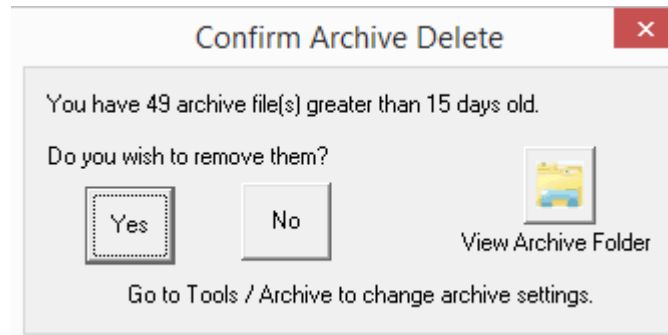


- Plot>Tools>Archive

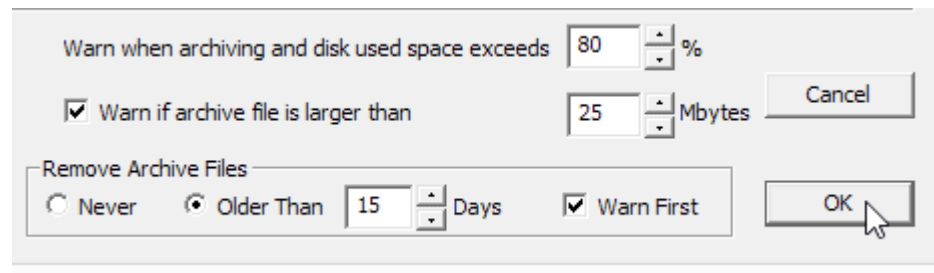
# Plot Auto Archive (Added in OMEGA 5.0)



- Auto Archive automatic delete message.



- Based on the settings at the bottom of the dialog box.



# Plot Auto Archive (Added in OMEGA 5.0)



- GSPPlot>Tools>Archive>Turn on Auto Archive and Choose dialog box settings
- Automatically helps track output or recreate the exact same output at a later date.
- Every time the Cut Button, Print Button or File>Save to Spool File is used, this feature writes user-specified PLT, PRM, SPL, Image Files, Font files and a summary to a separate archive ZIP file.
- Data saved as a ZIP file
- User chooses content to be saved.
- Once a job is archived, double click the ZIP file to view the archived information.
  - Use Windows File Manager to sort by date or by name.
  - Standard ZIP file actions can be performed on the ZIP file or its contents.
- Files can be set to automatically delete after certain # of days

# Plot Weed Sections



The image shows a software dialog box titled "Weed Sectioning" overlaid on a PCB layout. The layout features the letters "ee" and "ct" in a stylized font, with blue horizontal lines indicating sectioning paths. The dialog box contains the following settings:

- Weed Sectioning Type:**
  - Keep Existing Lines
  - Off
  - Vertical
  - Horizontal
  - Angle (degrees): 45
  - Grid
- Number of sections (approx):** 2
- Section Width:** 20.154 In.
- Section Height:** 2.651 In.
- Section offset:** 0.010 In.
- Discard Inside Segments Less Than:** 0.500 In.
- Discard Outside Segments Less Than:** 0.080 In.
- Invert Weed Segments
- Auto-Preview

Buttons for "OK", "Cancel", "Preference", and "Preview" are also visible.



# Plot Weed Sections – Added in OMEGA 5.0

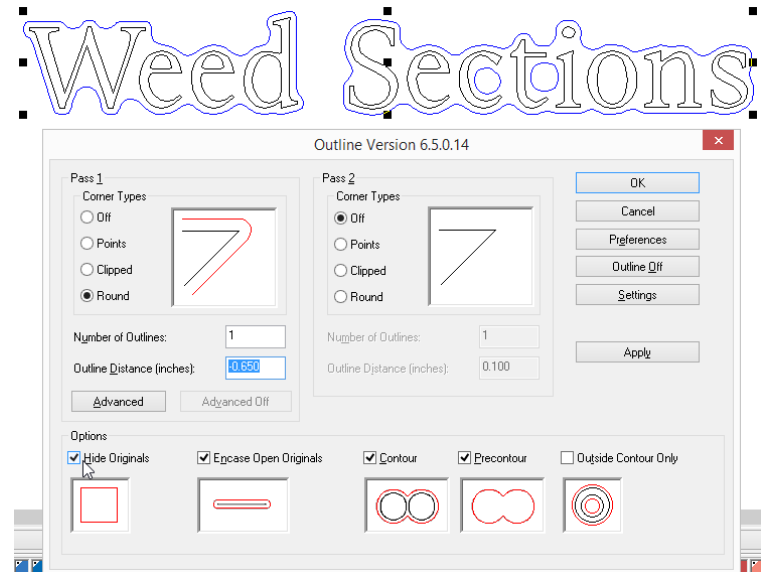
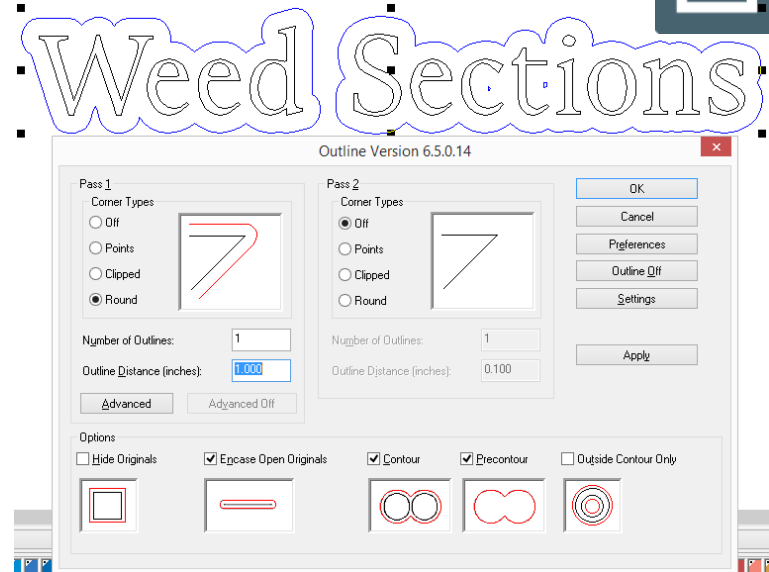


- Weedlines make it easier to remove background vinyl when weeding.
- To use: Plot>Setup>Weed Sectioning, or can be manually added by holding down the CTRL key while dragging lines from the GSPPlot rulers.
- Adds cut lines (weedlines) that cut through background vinyl, but skip over the vector shapes. As a result, the job is divided into sections (weed sections).
- Suggestions: Turn on “Keep Existing Lines” and “Auto Preview” and click “Preference.”

# Use Composer Outline for Weed Sections



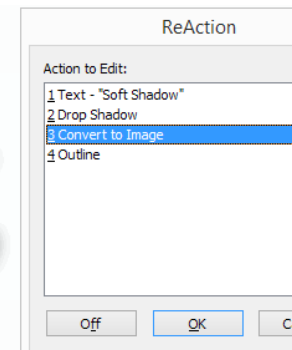
- #1: Apply a large outline to get a halo outline.
  - Turn on Round Corners
  - Use Apply button to preview
- #2: Select the outline and create an inline (negative outline value) to make the weedline closer to the original.
  - Hide Originals ON
  - Use Apply button to preview



# Composer Soft Shadows – OMEGA 3.0



- Create base text and assign color. Cuts Off.
- Create shadow (use “Partials” not “Composite”) On shadow, assign black spot color at 60% tint. Cuts off.
- Select the shadow.
- Image>Convert to Image.
  - 100 dpi. Lower resolution = softer look
  - Turn on Gaussian Blur, set value to 100. Higher blur value = softer look
  - Hide Originals OFF
  - Apply to preview
- Select vector shadow, TO BACK
- Create Outline: Select original text and vector shadow>Tools>Outline. No Fill, no stroke on outline.
- Select image>press 1>assign as Spot Color, Choose Spot Black
- Add highlights to original text if desired
- ReActionable Template .GCA files are located in c:\jobs\samples\templates folder

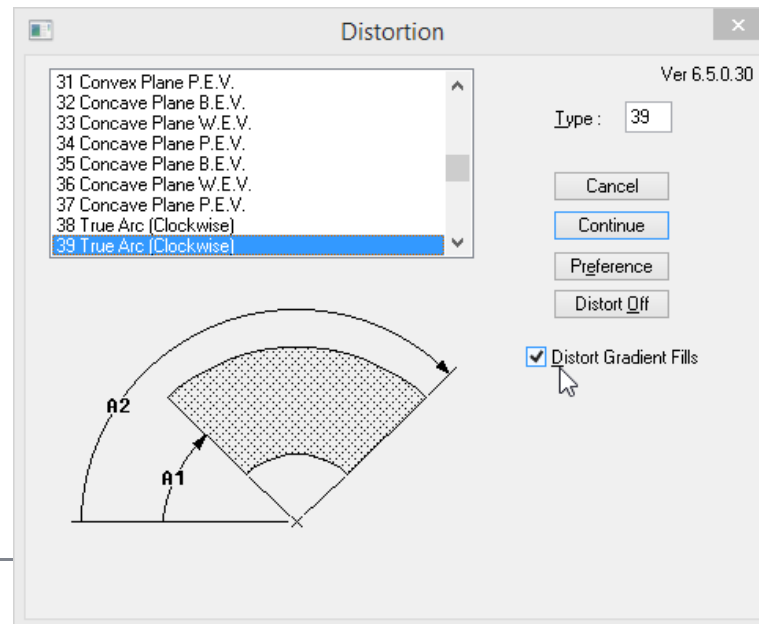


# SPL files: View, Create, Adjust, Print



- SPL files contain the output data for plotters, routers, and the EDGE.
- To create: PLOT>File>Save to Spool File. Choose output to be saved.
- Have many useful features:
  - From PLOT, File>Print Preview to preview or “preflight” cut and or print data as it will be sent to output devices.
    - PLOT>View Existing Spool file to view any SPL file.
  - In GQManager, see what jobs look like. Right click on job>Preview
  - Replay the exact same data over and over without any changes.
    - PLOT>Save as Spool File the
    - PLOT>Print existing Spool File or GQManager File>Open and Print or Open and Cut
  - Adjust registration:
    - Run SPLView.exe>File>Adjust
    - GQManager>File>Open & Print with Foil Adjust

# Distorted Gradient Fills: OMEGA 5.0

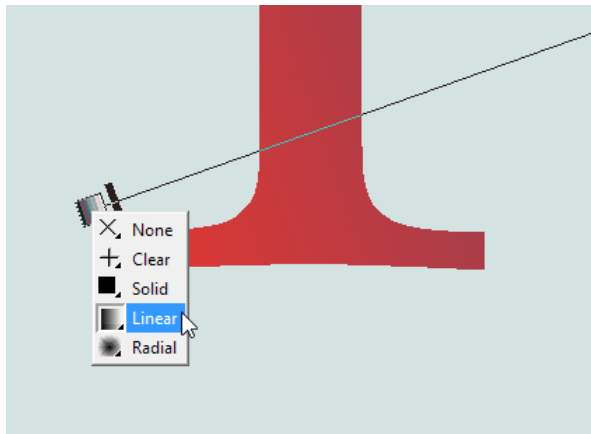
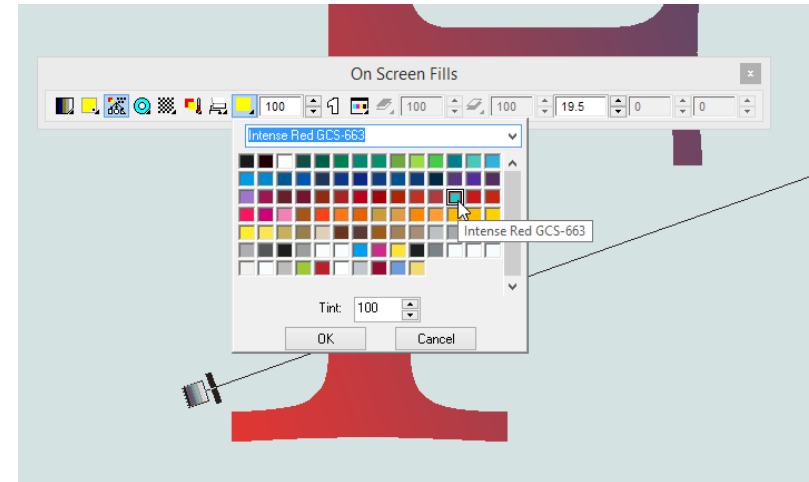


# Distorted Gradient Fills: OMEGA 5.0



- Composer>Tools>Distortion>Click Distort Gradient Fills.
- Fades follow distorted shapes
- Checkbox in Distortion that makes gradient fills into a series of stripes, then distorts those stripes. This allows fades to follow the distorted shapes.
  - To allow for smooth output of the gradients, the number /size of gradient stripes is determined by the size of the objects and the halftone selected. For example, if an object has GerberTone selected as the halftone, more stripes will be generated than Classical Dot at 70 lpi.
  - Also, if the original object is scaled up, more stripes will be generated when the reaction tree is regenerated to be sure a smooth gradient is created when printing to the Gerber Edge.
  - If Spot to spot gradients are distorted, the multiple spot gradients are automatically set to overlap.
  - Because this feature may create thousands of shapes, consider doing this operation as one of the last operations before output.

# Composer On-Screen Fills



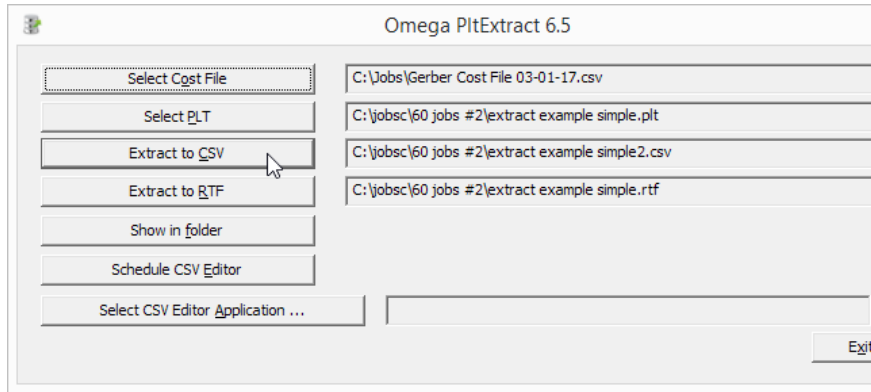
# Composer On-Screen Fills



- On Screen Fills: assign virtually every attribute of a fill right on the Composer screen.
  - Assign and edit solid spot colors and spot colors with tints
  - Assign and edit process colors
  - Create linear or radial fills with single or multiple colors and tints
  - Rotate linear fills and change the center point of radial fills
  - Add or delete additional colors to linear or radial fills
  - Change the location of colors in linear or radial fills
  - Assign GerberColor Spectratone fills



# PLT Extract: OMEGA 6.5



\$GSPPLTEXT							
\$EXTRACTDATE	April 22,2017 10:20: Saturday	April	22	2017	10	20	
\$FULLNAME	C:\jobs\60 jobs #2\extract example simple.plt						
\$CREATEDATE	January 19,2017 07: Thursday	January	19	2017	7	52	
\$MODIFYDATE	April 06,2017 09:29: Thursday	April	6	2017	9	29	
\$FILESIZE	100,514 bytes						
\$PLTVERSION	292	124					
\$SIGNATURE	6.5.0.46						
\$PROCESS	No						
\$SPECTRATONE	No						
\$PANTONE	No						
\$COMPOSERMATERIALS-	6						
\$COMMENT_COMPOSERVINYLS	summary	layer nam:	vinyl nam:	vinyl colo:	full name:	width(in):	height(in):
\$D0	White-Gerber 220 Vinyl,	wid:	Gerber 22	White	White-Ge	12.446	9.984
\$D1	Intense Blue GCS-047,	width=	5.770 inches,	height=	Intense Bl	5.77	3.181
\$D2	Ruby Red GCS-053,	width=	7.659 inches,	height=	3.3 Ruby Red	7.659	3.353
\$D3	Black GCS-012,	width=	9.205 inches,	height=	4.900 in Black GCS-	9.205	4.9
\$D4	Jet Black GCX-012,	width=	2.710 inches,	height=	1.02 Jet Black C	2.71	1.021
\$D5	Peacock Blue-Gerber 220 Viny	Gerber 22	Peacock B	Peacock B		7.565	6.327
\$COMPOSERMATERIALS\$							
\$COMMENT_COMPOSERMATERIALCOST	cost summary	total vinyl	total cost:	total sq(ff)	total viny	total foil	total ln(ft)
\$COMPOSERVINYLS	Total Composer vin	1.4	0.44	1.85	2.48	1.45	3.93
\$DESCRIPTION	Simple PLT file for PLT Extractor						
\$CUSTOMER	Joe Customer						



Filename: \$FULLNAME , Created: \$CREATEDATE Modified: \$MOI  
 \$DesignTime  
 \$DesignSize  
 \$SYSTEMFONTSUMMARY  
 \$GERBERFONTSUMMARY  
 \$VINYLNAMECOMPOSERSUMMARY  
 \$FOILNAMECOMPOSERSUMMARY  
 \$TOTALVINYLSQFTCOMPOSERCOST



Filename: C:\jobs\60 jobs #2\extract example simple.plt , Created:  
 Design Time: 00 h 44 min 07 sec  
 Design Size: Width=21.229 inches Height=9.983 inches  
 System Fonts: Arial (Char. Count=5)  
 Gerber Fonts: HELV(B OLD COND ACCT.AK.REV.C (Char. Count=4), GOU DY HANDTOOLED ACCT.A.K.REV.C (Char. Count=3)  
 Composer vinyl names: Gerber 220 Vinyl White, Gerber 220 Vinyl Peacock Blue  
 Composer foil names: Intense Blue GCS-047, Ruby Red GCS-053, Black GCS-012, Jet Black GCX-012,  
 Composer Total Vinyl+Foil Square Foot Costs: \$1.85



- Extracts design, material and output data from PLT files. Saves info as CSV.
- Can be linked to a material cost file
  - Display PLT vinyl/foil costs
  - Display output costs if the job is output from Plot
- Merge extracted information into a PLT file:
  1. Insert new AutoText Field Codes in Composer that will automatically merge the CSV data into a PLT file OR
  2. Copy and paste extracted CSV data from a spreadsheet directly into Composer